

GCN-MEP

Gas-Actuated Concrete Nailer

SIMPSON

Strong-Tie

®



(800) 999-5099
strongtie.com

GCN-MEP / GCN-MEPMAG Gas-Actuated Concrete Nailer

The GCN-MEP gas-actuated concrete nailer is a portable fastener tool for attaching light-duty fixtures to concrete, steel, concrete block (CMU), lightweight concrete over metal deck, and cold-formed steel. As a magazine tool, the GCN-MEPMAG is ideal for attaching drywall track, furring strips, hat track and angle track with the GDP-series collated pins. As a single-shot tool, the GCN-MEP is great for attaching mechanical, electrical and plumbing fixtures with pre-assembled pins/accessories such as washer pins, ceiling clips, top hats and threaded studs. The preassembled pins for the single-shot GCN-MEP tool use 0.300" fasteners with 0.125" diameter shanks for stronger fastening performance. Both the single-shot and the magazine tool offer portability without the need for cords or hoses, and are actuated with GFC34 gas fuel cells.

Features

- Power to drive 0.125"-diameter pins
- Flexibility to drive ½" to 1½" pins
- Flexibility to drive 0.250" - and 0.300"-diameter-headed pins
- Pin-depth adjustment dial
- Battery charge indicator light
- Comfortable "sure-grip" rubber handle and ladder hook
- Easy start-up procedure: Insert fuel cell, insert battery, load pins and begin use
- FREE tool first-aid repair program (see back cover)

Specifications

- Tool dimensions:
 - Length: 12.5" (317.5 mm), 17" (432.8 mm)
 - Tool weight: 6.6 lb. (3 kg), 8.3 lb. (3.7 kg) with magazine
 - Height: 15.3" (389 mm)
- Tool weight: 8.3 lb. (3.7 kg)
- Compatible fasteners:
 - Length: ½" (12.7 mm) to 1½" (38 mm)
 - Head diameter: 0.250" and 0.300"
 - Shank diameter: 0.106" to 0.125"
- Average number of shots per battery charge: 3,300
- Average number of shots per fuel cell: 1,200
- Average cyclic firing rate: 2 shots/second
- Average battery charge time (6V NiMH): 2 hours
- Operation temperature range: 20°–120°F (–6°–49°C)
- Magazine capacity: 42
- Maximum fastenings before reloading: 40

The magazine is designed to retain two pins during use to prevent the tool from discharging without a fastener (which can damage the tool and possibly cause injury). The tool will resume normal operation when additional pins are loaded.

Minimum Cleaning Required

The GCN-MEP has a very efficient ignition system that provides complete fuel combustion. This results in a cleaner operating tool, which, in turn, results in more tool energy and higher productivity. To maintain maximum level of productivity, periodic cleaning is recommended.

- Only requires cleaning every 20,000 shots
- Easy access to the air filter and piston chamber

The GCN-MEP Gas-Actuated Concrete Nailer Is Ideal for Fastening:

- Conduit clips
- Cable straps
- Ceiling clips
- Lath wire for stucco
- Low-voltage cable
- Water-proofing membrane



GCN-MEP

GCN-MEPKT or GCN-MEPMAGKT
(with magazine)MEP-MAG1KT
sold separately

GCN-MEP Gas-Actuated Pins and Assemblies for Mechanical, Electrical and Plumbing (MEP) Applications

New, preassembled MEP fasteners are available for use with the GCN-MEP gas-actuated concrete nailer designed for high-volume applications such as affixing conduit clips, rod hangers and cable ties. With the 0.300" heads, these versatile pins and assemblies can also be used with common powder-actuated tools from fastening into harder substrates (structural steel or extra-hard concrete).

Code/Standards: ICC-ES ESR-2811 (GRH, GAC, GW and GTH series)

Mechanical, Electrical and Plumbing Pins

All single-shot pins are 0.125" in diameter and 1" in length unless specified.

Model No.	Description	Pack Qty.	Compatible Gas-Actuated Nailer
GRH25-R100	1/4" rod hanger with pin	100	GCN-MEP, T3
GRH37-R100	3/8" rod hanger with pin	100	GCN-MEP, T3
GCC50-R100	1/2" conduit clip with pin	100	GCN-MEP, T3
GCC75-R100	3/4" conduit clip with pin	100	GCN-MEP, T3
GCC100-R100	1" conduit clip with pin	100	GCN-MEP, T3
GCC125-R50	1" conduit clip (13 ga. steel) with pin	50	GCN-MEP, T3
GCL50-R50	1/2" conduit clamp with pin	50	GCN-MEP, T3
GCL75-R25	3/4" conduit clamp with pin	25	GCN-MEP, T3
GAC-R100	Angle clip with pin	100	GCN-MEP, T3
GCT-R50	Tie-strap holder with pin	50	GCN-MEP, T3
GW50-R200	1/2" dome washer with 0.110" x 0.128" dia. x 1/2" length step-shank pin	200	GCN-MEP, T3
GW75-R200	1/2" dome washer w/ 0.125" dia. x 3/4" length pin	200	GCN-MEP, T3
GW100-R100	1/2" dome washer with pin	100	GCN-MEP, T3
GTS4-5075-R200	1/4" threaded stud (1/4-20 thread), 1/2" thread length, 3/4" shank length (0.127" dia.)	200	GCN-MEP, T3
GTH-R200	Top Hat Pin	200	GCN-MEP, T3



GRH



GCC



GCL



GAC



GCT



GW



GTS



GTH

Fuel Cell

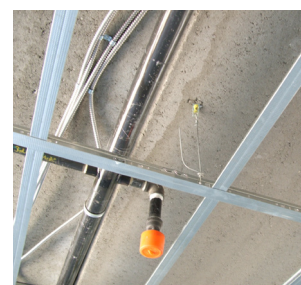
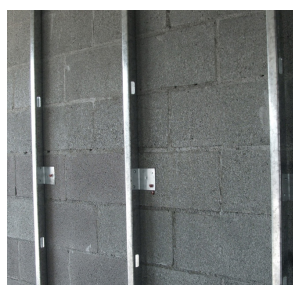
The GFC34 fuel cell is designed to operate with the GCN-MEP gas-actuated concrete nailer and also works with most major-brand gas-actuated concrete-nailer tools. Each GFC34 provides an average of 1,200 shots and can operate at temperatures as low as 20°F and altitudes up to 8,000'. The GFC34 are offered in a two-pack clamshell (GFC34-RC2). One GFC34 is included with each pack of GDP pins.

Gas Fuel Cells for the GCN-MEP

Model No.	Description	Pack Qty.	Packs/ Carton	Compatible with These Tools
GFC34-RC2	(2) 34-gram fuel cells	2	6	Simpson Strong-Tie GCN-MEP and GCN-150 Others: TF1100, C3, C4
GFC34	(1) 34-gram fuel cell	1	12	Simpson Strong-Tie GCN-MEP and GCN-150 Others: TF1100, C3, C4



GFC34



GCN-MEPKT

GCN-MEP Gas-Actuated Concrete Nailer Kit

A GCN-MEP can be purchased as part of a larger kit. This kit includes:

- GCN-MEP nailer
- 2 batteries
- Battery charger
- Allen wrenches
- Safety glasses and ear plugs
- Operator's manual/tool schematic
- Rugged tool box



GCN-MEPKT

GCN-MEPMAGKT

Gas-Actuated Concrete Nailer and Magazine Kit:

- GCN-MEP nailer
- MEP-MAG magazine
- 2 batteries
- Battery charger
- Allen wrenches
- Safety glasses
- Operator's manual/tool schematic
- Rugged tool box



MEP-MAG

The MEP-MAG magazine can be installed on the GCN-MEP tool for installing GDP collated pins.

Extension Pole Kit



Extension Poles for GCN-MEP, GCN150

Model	Description	Length
PETG-6KT	Complete tool, with boot, handle and one extension	6'
PETG-8KT	Complete tool, with boot, handle and two extensions	8'
PETH2	Handle	2'
PETG	Boot	N/A
PETS2	Pole extension	2'
PETS4	Pole extension	4'

GDP Collated Pins (requires MEP-MAG1KT) Code/Standards: ICC-ES ESR-2811

Model No.	Description	Qty Pins/Pack +1 Fuel Cell	Compatible Gas-Actuated Nailers
GDP-50KT	0.106" dia. x ½" pin	1,000	GCN150, GCN-MEP, TF1100, C3
GDP-62KT	0.106" dia. x ⅝" pin	1,000	GCN150, GCN-MEP, TF1100, C3
GDP-75KT	0.106" dia. x ¾" pin	1,000	GCN150, GCN-MEP, TF1100, C3
GDP-100KT	0.106" dia. x 1" pin	1,000	GCN150, GCN-MEP, TF1100, C3
GDP-125KT	0.106" dia. x 1¼" pin	1,000	GCN150, GCN-MEP, TF1100, C3
GDP-150KT	0.106" dia. x 1½" pin	1,000	GCN150, GCN-MEP, TF1100, C3



GDP

GDP Collated Step-Shank Pins (requires MEP-MAG1KT)

Model No.	Description	Qty Pins/Pack +1 Fuel Cell	Compatible Gas-Actuated Nailers
GDPS-50KT	1.09"/1.11" dia. x ½" pin	1,000	GCN150, GCN-MEP, TF1100, C3
GDPS-62KT	1.09"/1.11" dia. x ⅝" pin	1,000	GCN150, GCN-MEP, TF1100, C3
GDPS-75KT	1.09"/1.11" dia. x ¾" pin	1,000	GCN150, GCN-MEP, TF1100, C3



GDPS

GDP Collated Spiral-Knurled Pins (requires MEP-MAG1KT)

Model No.	Description	Qty Pins/Pack +1 Fuel Cell	Compatible Gas-Actuated Nailers
GDPSK-138KT	0.110" dia. x 1⅜" spiral-knurled pin	1,000	GCN150, GCN-MEP, TF1100, C3



GDPSK

For load and technical data, see the *Anchoring, Fastening and Restoration Systems for Concrete and Masonry* catalog or visit strongtie.com.



Ask about our Tool First-Aid Program — committed to keeping a working tool in your hands.

- Minimal downtime – keeps you productive
- Call (800) 999-5099 for more information

Simpson Strong-Tie offers a full line of anchors, adhesives, PAT and drill bits for all your anchoring and fastening applications.